

1991 Volkswagen V.I.N. decoder

SERIES:

B = Fox 2dr Economy
 Golf 2dr GL
C = Cabriolet Custom
D = GTI 2dr 8Valve
 Cabriolet Carat
 Corrado Sport
E = Cabriolet Etienne
 Aigner
F = Passat GL
 Golf 4dr GL
G = Passat GL Wagon
 Fox 4dr GL
H = GTI 2dr 16Valve
M = Jetta 2dr Custom
R = Jetta 4dr Custom
T = Jetta 4dr GLI
 16Valve
 Vanagon Multi-
 van
Y = Vanagon Bus
Z = Vanagon Camper

Country of origin	Manufacturer	Vehicle Type	Series	Engine	Restraint System	Model (position 7 & 8)	Check Digit	Model Year	Assembly Plant	Sequential serial number (position 12 - 17)						
1	2	3	4	5	6	7	8	9	10	11	12	13	14	15	16	17

Country Code: 1 Volkswagen, 2 Type
 B = VW of Brazil, V = VW
 B = Car, W = Car, Z = MPV
 W = Europe, 3 = Mexico, 9 = Brazil
 See Chart 2
 0-9 or X or Y
 1991
 M

M 1991

PLANT:

E = Emden
 G = Graz
 H = Hannover
 K = Osnabrueck
 M = Mexico
 P = Brazil
 W = Wolfsburg

A = 4cyl 1.8L (G) Fox 81HP
A = 4cyl 1.8: (G) Golf / Jetta / GTI 100HP
B = 4cyl 1.8L (G) Fox 81HP
 4cyl 1.8L (G) Cabriolet 94HP
 4cyl 1.8L (G) Golf / Jetta / GTI 105HP
 4cyl 1.8L (G) Corrado 158HP
 4cyl 2.0L (G) Passat 134HP
 4cyl 2.1L (G) Vanagon 90HP
C = 4cyl 1.8L (G) Cabriolet 94HP
 4 cyl 2.0L (G) Passat 134HP
E = 4cyl 2.0L (G) Golf / Jetta / GTI 134HP
F = 4cyl 1.6L (Diesel) Jetta 59HP
G = 4cyl 1.6L (Diesel) Jetta 52HP
J = 4cyl 2.0L (G) Golf / Jetta / GTI 134HP
K = 4cyl 2.0L (G) Golf / Jetta / GTI 100HP

MODEL:

1G = Golf/Jetta/GTI
 15 = Cabriolet
 25 = Vanagon
 30 = Fox
 31 = Passat
 50 = Corrado

Volkswagen V.I.N. decoder



'98 & Prior Restraints:

- 0 Active - Dr/Pass.
- 2 Passive
- W/manual lap.
- 4 ELRA
- W/manual lap.
- 5 AirBag - Dr.
- Active - Dr/Pass.
- 6 AirBag - Dr/Pass.
- Side AirBag Front Dr/Pass.
- Active - Dr/Pass.
- 8 AirBag - Dr/Pass.
- Active - Dr/Pass.

NOTES:

All '98 Passat an New Beetle Vehicles are equipped with depowered AirBags.

Dr = Driver Side
 Pass = Passenger Side

Country of origin	Manufacturer	Vehicle Type	Series	Engine	Restraint System	Model (position 7 & 8)	Check Digit	Model Year	Assembly Plant	Sequential serial number (position 12 - 17)						
1	2	3	4	5	6	7	8	9	10	11	12	13	14	15	16	17

'99 Restraints:

2 AirBag Dr/Pass (Depowered)
 Side AirBag - Front Dr/Pass
 6 AirBag Dr/Pass (Standard)
 Side AirBag - Front Dr/Pass
 8 AirBag - Dr/Pass. Active - Dr/Pass

Passat, EuroVan, New Golf, New GTI:

2 or 8 AirBag Dr/Pass. Active - Dr/Pass (Depowered)
 3 or 6 AirBag - Dr/Pass (Depowered)
 Side AirBag - Front Dr/Pass
 4 AirBag Dr/Pass (Depowered)
 Side AirBag - Front & Rear Dr/Pass

Check Digit:
0-9 or "X"

This is a calculated digit per NHTSA code to determine the validity of a complete Vehicle Identification Number.

Must follow steps in order!

- 1- Model Year (position #10)
Locate & use appropriate card.
- 2- Model Code (positions #7 & #8)
- 3- Vehicle Series (position #4)
- 4- Engine Code (position #5)

Model Year

- A = 1980
- B = 1981
- C = 1982
- D = 1983
- E = 1984
- F = 1985
- G = 1986
- H = 1987
- J = 1988
- K = 1989
- L = 1990
- M = 1991
- N = 1992
- P = 1993
- R = 1994
- S = 1995
- T = 1996
- V = 1997
- W = 1998
- X = 1999

1992 Volkswagen V.I.N. decoder

SERIES:

B = Fox 2dr Base
 Golf 2dr GL
 C = Cabriolet Base
 D = GTI 2dr 8Valve
 Cabriolet Carat
 Corrado Sport G60
 E = Corrado 2dr SLC
 Passat CL
 F = Passat GL
 Golf 4dr GL
 G = Passat GL Wagon
 Fox 4dr GL
 H = GTI 2dr 16Valve
 Passat GLS
 J = Passat GLX
 R = Jetta GL
 S = Jetta Carat
 T = Jetta GLI 16Valve

Country of origin	Manufacturer	Vehicle Type	Series	Engine	Restraint System	Model (position 7 & 8)	Check Digit	Model Year	Assembly Plant	Sequential serial number (position 12 - 17)						
1	2	3	4	5	6	7	8	9	10	11	12	13	14	15	16	17
3	V	W	H	E	2	1	G	5	N	M	0	0	2	3	4	5
Country Code	Volkswagen	Type			See Chart			0-9 or X	1992							

N 1992

Sequential serial number (position 12 - 17)

PLANT:

E = Emden
 G = Graz
 H = Hannover
 K = Osnabrueck
 M = Mexico
 P = Brazil
 W = Wolfsburg

B = VW of Brazil
 V = VW
 B = Car
 W = Car
 2 = MPV
 W = Europe
 3 = Mexico
 9 = Brazil

A = 4cyl 1.8L (G) Fox 81HP
 A = 4cyl 1.8: (G) Golf / Jetta / GTI 100HP
 B = 4cyl 1.8L (G) Fox 81HP
 4cyl 1.8L (G) Cabriolet 94HP
 4cyl 1.8L (G) Golf / Jetta / GTI 105HP
 4cyl 1.8L (G) Corrado 158HP
 4cyl 2.0L (G) Passat 134HP
 C = 4cyl 1.8L (G) Cabriolet 94HP
 4cyl 2.0L (G) Passat 134HP
 4cyl 1.8L (G) Corrado 158HP

D = 6cyl 2.8L (G) Corrado 178HP
 6 cyl 2.8L (G) Passat 172HP
 E = 4cyl 2.0L (G) Golf / Jetta / GTI 134HP
 6cyl 2.8L (G) Corrado 178HP
 6cyl 2.8L (G) Passat 172HP
 F = 4cyl 1.8L (Diesel) Jetta 59HP
 J = 4cyl 2.0L (G) Golf / Jetta / GTI 134HP
 K = 4cyl 1.8L (G) Golf / Jetta / GTI 100HP

MODEL:

1G = Golf/ Jetta/GTI
 15 = Cabriolet
 30 = Fox
 31 = Passat
 50 = Corrado

Volkswagen V.I.N. decoder

Country of origin	Manufacturer	Vehicle Type	Series	Engine	Restraint System	Model (position 7 & 8)	Check Digit	Model Year	Assembly Plant	Sequential serial number (position 12 - 17)						
1	2	3	4	5	6	7	8	9	10	11	12	13	14	15	16	17
											This is the sequential production number of the specific vehicle.					



'98 & Prior Restraints:

- 0 Active - Dr/Pass.
- 2 Passive W/Manual lap.
- 4 ELRA W/Manual lap.
- 5 AirBag - Dr.
- Active - Dr/Pass.
- 6 AirBag - Dr/Pass. Side AirBag Front Dr/Pass.
- Active - Dr/Pass.
- 8 AirBag - Dr/Pass. Active - Dr/Pass.

NOTES:

All '98 Passat and New Beetle Vehicles are equipped with depowered AirBags.

Dr = Driver Side
 Pass = Passenger Side

'99 Restraints:

- Golf, GTI, Jetta, Cabrio, New Beetle & New Jetta:
- 2 AirBag Dr/Pass (Depowered)
- Side AirBag - Front Dr/Pass
- 6 AirBag Dr/Pass (Standard)
- Side AirBag - Front Dr/Pass
- 8 AirBag - Dr/Pass. Active - Dr/Pass

Passat, EuroVan, New Golf, New GTI:

- 2 or 8 AirBag Dr/Pass. Active - Dr/Pass (Depowered)
- 3 or 6 AirBag - Dr/Pass (Depowered)
- Side AirBag - Front Dr/Pass
- 4 AirBag Dr/Pass (Depowered)
- Side AirBag - Front & Rear Dr/Pass

Check Digit:

0-9 or "X"
 This is a calculated digit per NHTSA code to determine the validity of a complete Vehicle Identification Number.

Must follow steps in order!

- 1- Model Year (position #10)
 Locate & use appropriate card.
- 2- Model Code (positions #7 & #8)
- 3- Vehicle Series (position #4)
- 4- Engine Code (position #5)

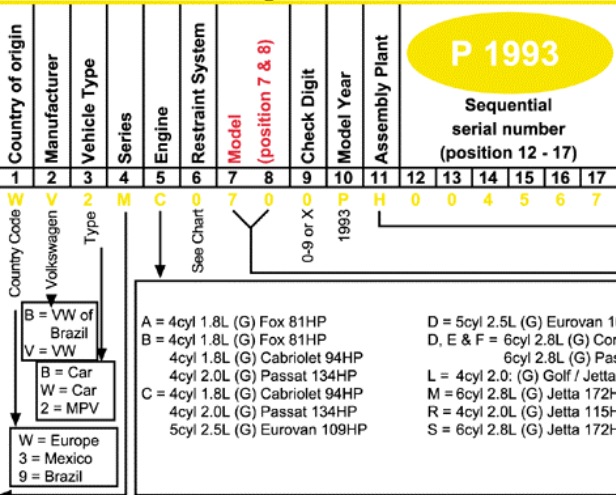
Model Year

- A = 1980
- B = 1981
- C = 1982
- D = 1983
- E = 1984
- F = 1985
- G = 1986
- H = 1987
- J = 1988
- K = 1989
- L = 1990
- M = 1991
- N = 1992
- P = 1993
- R = 1994
- S = 1995
- T = 1996
- V = 1997
- W = 1998
- X = 1999

1993 Volkswagen V.I.N. decoder

SERIES:

A = Cabriolet Base
 B = Fox 2dr Base
 Golf III 2dr GL
 Cabriolet Classic
 D = GTI 2dr
 E = Corrado 2dr SLG
 F = Passat GL
 Golf III 4dr GL
 G = Passat GL Wagon
 H = EuroVan CL
 Passat GLS
 J = Passat GLX
 K = EuroVan GL
 M = EuroVan MV Camper
 N = Passat GLX Wagon
 R = Jetta III GL
 S = Jetta III GLS
 T = Jetta III GLX



PLANT:

E = Emden
 G = Graz
 H = Hannover
 K = Osnabrueck
 M = Mexico
 P = Brazil
 W = Wolfsburg

MODEL:

1G = Golf III
 Jetta III
 GTI
 15 = Cabriolet
 30 = Fox
 31 = Passat
 50 = Corrado
 70 = Eurovan

'98 & Prior Restraints:

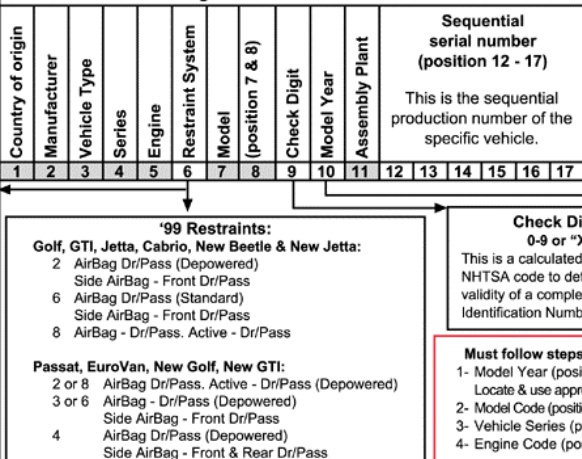
- 0 Active - Dr/Pass.
- 2 Passive
W/manual lap.
- 4 ELRA
W/manual lap.
- 5 AirBag - Dr.
Active - Dr/Pass.
- 6 AirBag - Dr/Pass.
Side AirBag Front
Dr/Pass.
Active - Dr/Pass.
- 8 AirBag - Dr/Pass.
Active - Dr/Pass.

NOTES:

All '98 Passat and New Beetle Vehicles are equipped with depowered AirBags.

Dr = Driver Side
 Pass = Passenger Side

Volkswagen V.I.N. decoder



Model Year

A = 1980
 B = 1981
 C = 1982
 D = 1983
 E = 1984
 F = 1985
 G = 1986
 H = 1987
 J = 1988
 K = 1989
 L = 1990
 M = 1991
 N = 1992
 P = 1993
 R = 1994
 S = 1995
 T = 1996
 V = 1997
 W = 1998
 X = 1999

1994 Volkswagen V.I.N. decoder

SERIES:

B = Golf III 2dr GL
 D = GTI 2dr VR6
 E = Corrado 2dr SLC
 F = Golf III 4dr GL
 H = EuroVan GL
 J = Passat GLX
 K = EuroVan GLS
 M = EuroVan MV Camper
 N = Passat GLX Wagon
 R = Jetta III GL
 S = Jetta III GLS
 T = Jetta III GLX

Country of origin	Manufacturer	Vehicle Type	Series	Engine	Restraint System	Model (position 7 & 8)	Check Digit	Model Year	Assembly Plant	Sequential serial number (position 12 - 17)							
1	2	3	4	5	6	7	8	9	10	11	12	13	14	15	16	17	
W	Volkswagen	V	W	J	F	4	3	1	2	R	E	0	0	5	6	7	8

R 1994

Sequential serial number (position 12 - 17)

PLANT:

E = Emden
 G = Graz
 H = Hannover
 K = Osnabrueck
 M = Mexico
 W = Wolfsburg

Country Code
 Volkswagen V
 Type
 W = Car
 2 = MPV
 W = Europe
 3 = Mexico

A = 4cyl 2.0L (G) Golf / Jetta 115HP
 B = 4cyl 2.0L (G) Golf / Jetta 115HP
 C = 4cyl 2.0L (G) Golf / Jetta 115HP
 D = 5cyl 2.5L (G) EuroVan 109HP
 F = 6cyl 1.9L (G) Corrado 178HP
 F = 6cyl 1.9L (G) Passat 172HP
 S = 6cyl 2.8L (G) GTI VR6 / Jetta 172HP

MODEL:

1H = Golf III
 Jetta III
 GTI - VR6
 3I = Passat
 50 = Corrado
 70 = Eurovan

Volkswagen V.I.N. decoder

'98 & Prior Restraints:

- 0 Active - Dr/Pass.
- 2 Passive
- W/manual lap.
- 4 ELRA
- W/manual lap.
- 5 AirBag - Dr.
- Active - Dr/Pass.
- 6 AirBag - Dr/Pass.
- Side AirBag Front Dr/Pass.
- Active - Dr/Pass.
- 8 AirBag - Dr/Pass.
- Active - Dr/Pass.

NOTES:

All '98 Passat on New Beetle Vehicles are equipped with depowered AirBags.

Dr = Driver Side
 Pass = Passenger Side

Country of origin	Manufacturer	Vehicle Type	Series	Engine	Restraint System	Model (position 7 & 8)	Check Digit	Model Year	Assembly Plant	Sequential serial number (position 12 - 17)						
1	2	3	4	5	6	7	8	9	10	11	12	13	14	15	16	17



This is the sequential production number of the specific vehicle.

'99 Restraints:

- Golf, GTI, Jetta, Cabrio, New Beetle & New Jetta:**
- 2 AirBag Dr/Pass (Depowered)
 - Side AirBag - Front Dr/Pass
 - 6 AirBag Dr/Pass (Standard)
 - Side AirBag - Front Dr/Pass
 - 8 AirBag - Dr/Pass. Active - Dr/Pass

- Passat, EuroVan, New Golf, New GTI:**
- 2 or 8 AirBag Dr/Pass. Active - Dr/Pass (Depowered)
 - 3 or 6 AirBag - Dr/Pass (Depowered)
 - Side AirBag - Front Dr/Pass
 - 4 AirBag Dr/Pass (Depowered)
 - Side AirBag - Front & Rear Dr/Pass

Check Digit: 0-9 or "X"

This is a calculated digit per NHTSA code to determine the validity of a complete Vehicle Identification Number.

Must follow steps in order!

- 1- Model Year (position #10)
- Locate & use appropriate card.
- 2- Model Code (positions #7 & #8)
- 3- Vehicle Series (position #4)
- 4- Engine Code (position #5)

Model Year

- A = 1980
- B = 1981
- C = 1982
- D = 1983
- E = 1984
- F = 1985
- G = 1986
- H = 1987
- J = 1988
- K = 1989
- L = 1990
- M = 1991
- N = 1992
- P = 1993
- R = 1994
- S = 1995
- T = 1996
- V = 1997
- W = 1998
- X = 1999

1995 Volkswagen V.I.N. decoder

SERIES:

B = Cabrio
 Golf 2dr III Sport
 C = Passat 4dr GLS
 D = Passat GLS Wagon
 E = Passat 4dr GLX
 EuroVan 3dr Panel
 F = Golf III 4dr GL
 Passat GLX Wagon
 H = GTI 2dr VR6
 Eurovan 3dr GL
 J = Golf III 4dr City
 EuroVan 4dr GL
 K = EuroVan 3dr GLS
 Golf III 4dr
 L = EuroVan GLS 4dr
 Golf III 4dr Celebrity Edition
 P = Jetta 4dr III
 R = Jetta III 4dr GL
 S = Jetta III 4dr GLS
 T = Jetta III 4dr GLX
 V = Jetta III 4dr City
 W = Jetta III 4dr Celebrity Edition

Canada Only:

A = Cabrio
 Golf 2dr CL
 D = Passat 4dr GLS
 B = Golf 2dr GL
 Passat GLS Wagon
 C = Passat 4dr GLX
 D = Golf 2dr GTI
 Passat GLX Wagon
 E = Golf 4dr CL
 Corrado
 F = Golf 4dr GL
 P = Eurovan 3dr CV

NOTE:
 No "III" on
 the Canadian
 Jetta models

Country of origin	Manufacturer	Vehicle Type	Series	Engine	Restraint System	Model (position 7 & 8)	Check Digit	Model Year	Assembly Plant							
1	2	3	4	5	6	7	8	9	10	11	12	13	14	15	16	17
3	Volkswagen	W	R	A	8	1	H	1	S	M	0	1	1	2	3	4
Country Code	Volkswagen	Type		See Chart		0-9 or X	1995									

S 1995

**Sequential
 serial number
 (position 12 - 17)**

E = Emden H = Hannover
 M = Mexico K = Osnabrueck
 W = Wolfsburg

MODEL:

1E = Cabrio
 1H = Golf /
 Jetta / GTI
 3A = Passat
 50 = Corrado*
 70 = Eurovan

*Canada Only

A = 4cyl 2.0L (G) Golf / Jetta / GTI (Except City) 115HP
 B = 4cyl 2.0L (G) Golf / Jetta / GTI / Cabrio 115HP
 C = 4cyl 2.0L (G) Golf / Jetta / Cabrio / Passat 115HP
 D = 6cyl 2.8L (G) Golf / Jetta / GTI (Except City) 172HP
 E = 6cyl 2.8L (G) Golf / Jetta / Passat 172HP
 F = 5cyl 2.5L (G) EuroVan 109HP
 G = 4cyl 1.9L (Diesel) Golf / Jetta / GTI 90HP
 6cyl 2.8L (G) Corrado 172HP (Canada)
 H = 4cyl 1.8L (G) Golf / Jetta / GTI 90KW (Canada)
 G = 5cyl 2.4L (Diesel) EuroVan 77HP (Canada)
 H = 4cyl 1.9L (Diesel) Golf / Jetta / GTI 90HP

Volkswagen V.I.N. decoder

'98 & Prior Restraints:

- 0 Active - Dr/Pass.
- 2 Passive
- W/manual lap.
- 4 ELRA
- W/manual lap.
- 5 AirBag - Dr.
- Active - Dr/Pass.
- 6 AirBag - Dr/Pass.
- Side AirBag Front
- Dr/Pass.
- Active - Dr/Pass.
- 8 AirBag - Dr/Pass.
- Active - Dr/Pass.

NOTES:

All '98 Passat an
 New Beetle Vehicles
 are equipped with
 depowered AirBags.

Dr = Driver Side
 Pass = Passenger Side

Country of origin	Manufacturer	Vehicle Type	Series	Engine	Restraint System	Model (position 7 & 8)	Check Digit	Model Year	Assembly Plant							
1	2	3	4	5	6	7	8	9	10	11	12	13	14	15	16	17



**Sequential
 serial number
 (position 12 - 17)**

This is the sequential
 production number of the
 specific vehicle.

'99 Restraints:

- Golf, GTI, Jetta, Cabrio, New Beetle & New Jetta:**
- 2 AirBag Dr/Pass (Depowered)
 - Side AirBag - Front Dr/Pass
 - 6 AirBag Dr/Pass (Standard)
 - Side AirBag - Front Dr/Pass
 - 8 AirBag - Dr/Pass. Active - Dr/Pass

- Passat, EuroVan, New Golf, New GTI:**
- 2 or 8 AirBag Dr/Pass. Active - Dr/Pass (Depowered)
 - 3 or 6 AirBag - Dr/Pass (Depowered)
 - Side AirBag - Front Dr/Pass
 - 4 AirBag Dr/Pass (Depowered)
 - Side AirBag - Front & Rear Dr/Pass

Check Digit:

0-9 or "X"
 This is a calculated digit per
 NHTSA code to determine the
 validity of a complete Vehicle
 Identification Number.

Must follow steps in order!

- 1- Model Year (position #10)
- Locate & use appropriate card.
- 2- Model Code (positions #7 & #8)
- 3- Vehicle Series (position #4)
- 4- Engine Code (position #5)

Model Year

- A = 1980
- B = 1981
- C = 1982
- D = 1983
- E = 1984
- F = 1985
- G = 1986
- H = 1987
- J = 1988
- K = 1989
- L = 1990
- M = 1991
- N = 1992
- P = 1993
- R = 1994
- S = 1995
- T = 1996
- V = 1997
- W = 1998
- X = 1999

1996 Volkswagen V.I.N. decoder

SERIES:

B = Cabrio
 D = GTI 2dr
 E = Passat 4dr GLX
 F = Golf 4dr GL / TDI
 Passat GLX Wagon
 G = Passat 4dr GLS / TDI
 H = Passat GLS / TDI Wagon
 GTI 2dr VR6
 P = Jetta 4dr Wolfsburg Ed.
 R = Jetta 4dr GL / TDI
 S = Jetta 4dr GLS
 T = Jetta 4dr GLX
 W = Jetta 4dr TREK

Canada Only:

A = Cabrio
 Golf 2dr CL
 Passat 4dr GLS/TDI
 B = Golf 2dr GL / TDI
 Passat GLS / TDI
 Wagon
 C = Passat 4dr GLX
 D = Golf 2dr GTI
 Passat GLX Wagon
 E = Eurovan 3dr
 Camper / Panel
 Golf 4dr CL
 K = Eurovan 3dr GLS
 L = Eurovan 4dr GLS
 P = Eurovan 3dr CV

Country of origin	Manufacturer	Vehicle Type	Series	Engine	Restraint System	Model (position 7 & 8)	Check Digit	Model Year	Assembly Plant	Sequential serial number (position 12 - 17)						
1	2	3	4	5	6	7	8	9	10	11	12	13	14	15	16	17
3	Volkswagen	W	W	B	8	1 H	9	T	M	1	2	3	4	5	6	

T 1996

**Sequential
serial number
(position 12 - 17)**

Country Code 3
 Volkswagen
 Vehicle Type W
 Series W
 Engine B
 Restraint System 8
 Model 1 H
 Check Digit 9
 Model Year T
 Assembly Plant M

See Chart 8

0-9 or X

1996

W = Car
 1 = Truck
 2 = MPV

W = Europe
 3 = Mexico

B = Brussels
 H = Hannover
 K = Osnabrueck

E = Emden
 M = Mexico
 W = Wolfsburg

MODEL:

1E = Cabrio
 1H = Golf / Jetta / GTI
 3A = Passat
 70 = Eurovan*

*Canada

A, L = 4cyl 2.0L (G) Golf / Jetta / GTI / Cabrio 115HP
 B = 4cyl 2.0L (G) Golf / Jetta / GTI / Cabrio 115HP
 C = 4cyl 2.0L (G) Passat 115HP
 D = 6cyl 2.8L (G) Golf / Jetta / GTI 172HP
 E = 6cyl 2.8L (G) Passat 172HP
 F = 5cyl 2.5L (G) EuroVan 109HP (Canada Only)
 G = 4cyl 1.9L (Diesel) Golf / Jetta / GTI 90HP
 H = 4cyl 1.9L (Diesel) Golf / Jetta / GTI / Passat 90HP
 J = 4cyl 1.9L (Diesel) EuroVan 77HP (Canada Only)
 K = 4cyl 1.9L (Diesel) Golf / Jetta / GTI 74HP (Canada)
 L = 4cyl 1.8L (Diesel) Golf / Jetta / GTI 90HP (Canada)

'98 & Prior Restraints:

- 0 Active - Dr/Pass.
- 1 W/manual lap.
- 4 ELRA
W/manual lap.
- 5 AirBag - Dr.
- Active - Dr/Pass.
- 6 AirBag - Dr/Pass.
Side AirBag Front Dr/Pass.
- Active - Dr/Pass.
- 8 AirBag - Dr/Pass.
Active - Dr/Pass.

NOTES:

All '98 Passat and New Beetle Vehicles are equipped with depowered AirBags.

Dr = Driver Side
 Pass = Passenger Side

Volkswagen V.I.N. decoder

Country of origin	Manufacturer	Vehicle Type	Series	Engine	Restraint System	Model (position 7 & 8)	Check Digit	Model Year	Assembly Plant	Sequential serial number (position 12 - 17)						
1	2	3	4	5	6	7	8	9	10	11	12	13	14	15	16	17



This is the sequential production number of the specific vehicle.

'99 Restraints:

- Golf, GTI, Jetta, Cabrio, New Beetle & New Jetta:**
- 2 AirBag Dr/Pass (Depowered)
 - Side AirBag - Front Dr/Pass
 - 6 AirBag Dr/Pass (Standard)
 - Side AirBag - Front Dr/Pass
 - 8 AirBag - Dr/Pass. Active - Dr/Pass

Passat, EuroVan, New Golf, New GTI:

- 2 or 8 AirBag Dr/Pass. Active - Dr/Pass (Depowered)
- 3 or 6 AirBag - Dr/Pass (Depowered)
- Side AirBag - Front Dr/Pass
- AirBag Dr/Pass (Depowered)
- Side AirBag - Front & Rear Dr/Pass

Check Digit: 0-9 or "X"

This is a calculated digit per NHTSA code to determine the validity of a complete Vehicle Identification Number.

Must follow steps in order!

- 1- Model Year (position #10)
Locate & use appropriate card.
- 2- Model Code (positions #7 & #8)
- 3- Vehicle Series (position #4)
- 4- Engine Code (position #5)

Model Year

- A = 1980
- B = 1981
- C = 1982
- D = 1983
- E = 1984
- F = 1985
- G = 1986
- H = 1987
- J = 1988
- K = 1989
- L = 1990
- M = 1991
- N = 1992
- P = 1993
- R = 1994
- S = 1995
- T = 1996
- V = 1997
- W = 1998
- X = 1999

1997 Volkswagen V.I.N. decoder

SERIES:

A = Cabrio
 B = Cabrio Highline
 D = GTI 2dr
 E = Passat 4dr GLX
 Eurovan 3dr Camper
 F = Golf 4dr GL / TDI
 Passat GLX Wagon
 G = GTI 2dr VR6 Dr. Ed.
 Passat 4dr GLS / TDI
 H = GTI 2dr VR6
 Passat GLS / TDI Wagon
 K = Golf 4dr K2 Edition
 Eurovan 3dr GLS
 L = Golf 4dr TREK
 M = Golf 4dr Jazz
 Eurovan 3dr MV
 R = Jetta 4dr GL/TDI
 S = Jetta 4dr GLS
 T = Jetta 4dr GLX
 V = Jetta 4dr GT
 W = Jetta 4dr TREK
 X = Jetta 4dr Jazz

Canada Only:

A = Golf 2dr CL
 B = Passat GLS/TDI
 B = Golf 2dr GL / TDI
 C = Passat 4dr GLX Wagon
 D = Passat GLX Wagon
 E = Golf 4dr CL

Country of origin	Manufacturer	Vehicle Type	Series	Engine	Restraint System	Model (position 7 & 8)	Check Digit	Model Year	Assembly Plant
1	2	3	4	5	6	7	8	9	10
3	V	W	B	A	8	1	E	3	V
Country Code	Volkswagen	Type			See Chart		0-9 or X	1997	
		W = Car 1 = Truck 2 = MPV							
		W = Europe 3 = Mexico							

V 1997

**Sequential
serial number
(position 12 - 17)**

B = Brussels E = Emden
 H = Hannover M = Mexico
 K = Osnabrueck W = Wolfsburg

A, L = 4cyl 2.0L (G) Golf / Jetta / GTI / Cabrio 115HP
 B = 4cyl 2.0L (G) Golf / Jetta / GTI / 115HP
 C = 4cyl 2.0L (G) Passat 115HP
 D = 6cyl 2.8L (G) Golf / Jetta / GTI 172HP
 E = 6cyl 2.8L (G) Passat 172HP
 F = 4cyl 1.9L (Diesel) Golf / Jetta / GTI 90HP
 G = 4cyl 1.9L (Diesel) Passat 90HP
 5cyl 2.4L (Diesel) EuroVan 77HP (Canada Only)
 H = 6cyl 2.8L (G) EuroVan 140HP
 J = 4cyl 1.9L (Diesel) Golf / Jetta / GTI 74HP (Canada)
 K = 4cyl 1.8L (G) Golf / Jetta / GTI 90HP (Canada Only)

MODEL:

1E = Cabrio
 1H = Golf /
 Jetta / GTI
 3A = Passat
 7D = Eurovan

Volkswagen V.I.N. decoder

'98 & Prior Restraints:

- 0 Active - Dr/Pass.
- 2 Passive
- W/manual lap.
- 4 ELRA
- W/manual lap.
- 5 AirBag - Dr.
- Active - Dr/Pass.
- 6 AirBag - Dr/Pass.
- Side AirBag Front
- Dr/Pass.
- Active - Dr/Pass.
- 8 AirBag - Dr/Pass.
- Active - Dr/Pass.

NOTES:

All '98 Passat an
 New Beetle Vehicles
 are equipped with
 depowered AirBags.

Dr = Driver Side
 Pass = Passenger Side

Country of origin	Manufacturer	Vehicle Type	Series	Engine	Restraint System	Model (position 7 & 8)	Check Digit	Model Year	Assembly Plant	Sequential serial number (position 12 - 17)
1	2	3	4	5	6	7	8	9	10	11



This is the sequential
production number of the
specific vehicle.

'99 Restraints:

- Golf, GTI, Jetta, Cabrio, New Beetle & New Jetta:**
- 2 AirBag Dr/Pass (Depowered)
 - Side AirBag - Front Dr/Pass
 - 6 AirBag Dr/Pass (Standard)
 - Side AirBag - Front Dr/Pass
 - 8 AirBag - Dr/Pass, Active - Dr/Pass
- Passat, EuroVan, New Golf, New GTI:**
- 2 or 8 AirBag Dr/Pass, Active - Dr/Pass (Depowered)
 - 3 or 6 AirBag - Dr/Pass (Depowered)
 - Side AirBag - Front Dr/Pass
 - 4 AirBag Dr/Pass (Depowered)
 - Side AirBag - Front & Rear Dr/Pass

Check Digit: 0-9 or "X"

This is a calculated digit per
 NHTSA code to determine the
 validity of a complete Vehicle
 Identification Number.

Must follow steps in order!

- 1- Model Year (position #10)
- Locate & use appropriate card.
- 2- Model Code (positions #7 & #8)
- 3- Vehicle Series (position #4)
- 4- Engine Code (position #5)

Model Year

A = 1980
 B = 1981
 C = 1982
 D = 1983
 E = 1984
 F = 1985
 G = 1986
 H = 1987
 J = 1988
 K = 1989
 L = 1990
 M = 1991
 N = 1992
 P = 1993
 R = 1994
 S = 1995
 T = 1996
 V = 1997
 W = 1998
 X = 1999

1998 Volkswagen V.I.N. decoder

SERIES:

Canada Only:

A = Cabrio GL
 B = Cabrio GLS
 New Beetle
 D = GTI 2dr
 F = Golf 4dr GL/TDI
 H = GTI 2dr VR6
 J = Golf 4dr Wolfsburg Ed.
 K = Golf 4dr K2 Edition
 M = Passat 4dr GLS (USA)
 N = Passat GLS/TDI Wagon (USA)
 P = Jetta 4dr Wolfsburg Ed.
 Passat 4dr GLS (USA)
 R = Jetta 4dr GL / TDI
 S = Jetta 4dr GLS
 T = Jetta 4dr GLX
 Passat GLS Syncro Wagon (USA)
 V = Jetta 4dr GT
 Y = Jetta 4dr K2 Edition

A = Passat 4dr GLS/TDI
 B = Passat 4dr GLS/TDI
 Wagon
 C = Golf 4dr Base
 Passat 4dr GLX
 F = Passat GLS Syncro
 Wagon

Country of origin	Manufacturer	Vehicle Type	Series	Engine	Restraint System	Model (position 7 & 8)	Check Digit	Model Year	Assembly Plant	Sequential serial number (position 12 - 17)							
1	2	3	4	5	6	7	8	9	10	11	12	13	14	15	16	17	
3	V	W	B	B	6	1	C	2	W	M	0	1	3	4	5	6	
Country Code Volkswagen	Volkswagen	Type W = Car 2 = MPV			See Chart	Model 1 C 0-9 or X	Check Digit 2	Model Year 1998	Assembly Plant M								

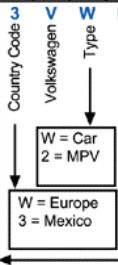


Sequential serial number (position 12 - 17)

B = Brussels E = Emden
 H = Hannover M = Mexico
 W = Wolfsburg

MODEL:
 1C = New Beetle
 1E = Cabrio
 1H = Golf/Jetta & GTI
 3B = Passat

A = 4cyl 2.0L (G) Golf / Jetta / GTI / Cabrio 115HP
 A = 4cyl 1.8L (G) Passat 150HP
 B = 4cyl 2.0L (G) Golf / Jetta / GTI / Cabrio / New Beetle 115HP
 D = 6cyl 2.8L (G) Golf / Jetta / GTI 172HP
 D = 6cyl 2.8L (G) Passat 190HP
 F = 4cyl 1.9L (Diesel) Golf / Jetta / New Beetle 90HP
 G = 4cyl 1.9L (Diesel) Passat 90HP



Volkswagen V.I.N. decoder

'98 & Prior Restraints:

- 0 Active - Dr/Pass.
- 2 Passive
W/manual lap.
- 4 ELRA
W/manual lap.
- 5 AirBag - Dr.
Active - Dr/Pass.
- 6 AirBag - Dr/Pass.
Side AirBag Front Dr/Pass.
Active - Dr/Pass.
- 8 AirBag - Dr/Pass.
Active - Dr/Pass.

NOTES:

All '98 Passat and New Beetle Vehicles are equipped with depowered AirBags.

Dr = Driver Side
 Pass = Passenger Side

Country of origin	Manufacturer	Vehicle Type	Series	Engine	Restraint System	Model (position 7 & 8)	Check Digit	Model Year	Assembly Plant	Sequential serial number (position 12 - 17)						
1	2	3	4	5	6	7	8	9	10	11	12	13	14	15	16	17



This is the sequential production number of the specific vehicle.

'99 Restraints:

- Golf, GTI, Jetta, Cabrio, New Beetle & New Jetta:**
- 2 AirBag Dr/Pass (Depowered)
Side AirBag - Front Dr/Pass
 - 6 AirBag Dr/Pass (Standard)
Side AirBag - Front Dr/Pass
 - 8 AirBag - Dr/Pass. Active - Dr/Pass

Passat, EuroVan, New Golf, New GTI:

- 2 or 8 AirBag Dr/Pass. Active - Dr/Pass (Depowered)
- 3 or 6 AirBag - Dr/Pass (Depowered)
Side AirBag - Front Dr/Pass
- 4 AirBag Dr/Pass (Depowered)
Side AirBag - Front & Rear Dr/Pass

Check Digit:

0-9 or "X"
 This is a calculated digit per NHTSA code to determine the validity of a complete Vehicle Identification Number.

Must follow steps in order!

- 1- Model Year (position #10)
Locate & use appropriate card.
- 2- Model Code (positions #7 & #8)
- 3- Vehicle Series (position #4)
- 4- Engine Code (position #5)

Model Year

- A = 1980
- B = 1981
- C = 1982
- D = 1983
- E = 1984
- F = 1985
- G = 1986
- H = 1987
- J = 1988
- K = 1989
- L = 1990
- M = 1991
- N = 1992
- P = 1993
- R = 1994
- S = 1995
- T = 1996
- V = 1997
- W = 1998
- X = 1999

1999 Volkswagen V.I.N. decoder

SERIES:

A = Cabrio
 B = Cabrio GLS
 New Beetle GL
 New Golf 4dr GL
 C = New Cabrio GL
 New Beetle GLS
 D = New Cabrio GLS
 New Beetle GLX
 E = EuroVan 3dr Camper
 F = Golf 4dr GL
 G = New Golf 4dr GLS
 H = GTI 2dr VR6
 J = Golf 4dr Wolfsburg Ed.
 K = EuroVan 3dr GLS
 M = Passat 4dr GLS (USA)
 EuroVan 3dr MV
 N = Passat GLS Wagon (USA)
 EuroVan 3dr Weekender
 P = Jetta 4dr Wolfsburg Ed.
 R = Jetta 4dr GL / TDI & New Jetta 4dr GL
 Passat GLS Syncro Wagon (USA)
 S = New Jetta 4dr GLS
 T = Jetta 4dr GLX
 Passat 4dr GLS Syncro (USA)
 U = Passat 4dr GLX Syncro (USA)
 W = Passat GLX Syncro Wagon (USA)

Canada Only:

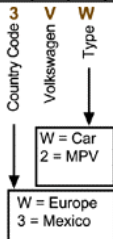
A = Passat 4dr GLS
 B = Passat GLS Wagon
 C = Golf 4dr Base
 E = Passat GLS Syncro
 Wagon
 F = Passat 4dr GLS
 Syncro
 G = Passat 4dr GLX
 Syncro
 H = Passat GLX Syncro
 Wagon

Country of origin	Manufacturer	Vehicle Type	Series	Engine	Restraint System	Model (position 7 & 8)	Check Digit	Model Year	Assembly Plant	Sequential serial number (position 12 - 17)						
1	2	3	4	5	6	7	8	9	10	11	12	13	14	15	16	17
3	V	W	B	B	8	1	E	5	X	M	8	0	3	4	5	6
Country Code	Volkswagen	Type		See Chart			0-9 or X	1998 X								

X 1999

**Sequential serial number
(position 12 - 17)**

E = Emden H = Hannover
 M = Mexico W = Wolfsburg



A = 4cyl 2.0L (G)Golf / Jetta / GTI /Beetle 115HP
 B = 4cyl 1.8L (G)Passat 150HP
 B = 4cyl 2.0L (G)Golf / Jetta / GTI / Cabrio 115HP
 C = 4cyl 2.0L (G)Golf / Jetta / GTI / Beetle 115HP
 D = 6cyl 2.8L (G)Golf / Jetta / GTI 172HP
 D = 4cyl 1.8L (G)TLEV New Beetle & Jetta 148HP
 D = 6cyl 2.8L (G)Passat 190HP
 E = 6cyl 2.8L (G)New Beetle, Jetta, Golf & GTI 174HP
 F = 4cyl 1.9L (Diesel) Golf / Jetta / GTI / Beetle 90HP
 H = 6cyl 2.8L (G) EuroVan 140HP

MODEL:
 1C = New Beetle
 1E = Cabrio
 1H = Golf /Jetta & GTI
 3B = Passat
 7D = EuroVan
 1J = New Golf/GTI
 9M = New Jetta

'98 & Prior Restraints:

- 0 Active - Dr/Pass.
- 2 Passive
- W/manual lap.
- 4 ELRA
- W/manual lap.
- 5 AirBag - Dr.
- Active - Dr/Pass.
- 6 AirBag - Dr/Pass.
- Side AirBag Front
- Dr/Pass.
- Active - Dr/Pass.
- 8 AirBag - Dr/Pass.
- Active - Dr/Pass.

NOTES:
 All '98 Passat and New Beetle Vehicles are equipped with depowered AirBags.

Dr = Driver Side
 Pass = Passenger Side

Volkswagen V.I.N. decoder

Country of origin	Manufacturer	Vehicle Type	Series	Engine	Restraint System	Model (position 7 & 8)	Check Digit	Model Year	Assembly Plant	Sequential serial number (position 12 - 17)						
1	2	3	4	5	6	7	8	9	10	11	12	13	14	15	16	17



This is the sequential production number of the specific vehicle.

'99 Restraints:

- Golf, GTI, Jetta, Cabrio, New Beetle & New Jetta:**
- 2 AirBag Dr/Pass (Depowered)
 - Side AirBag - Front Dr/Pass
 - 6 AirBag Dr/Pass (Standard)
 - Side AirBag - Front Dr/Pass
 - 8 AirBag - Dr/Pass. Active - Dr/Pass

- Passat, EuroVan, New Golf, New GTI:**
- 2 or 8 AirBag Dr/Pass. Active - Dr/Pass (Depowered)
 - 3 or 6 AirBag - Dr/Pass (Depowered)
 - Side AirBag - Front Dr/Pass
 - 4 AirBag Dr/Pass (Depowered)
 - Side AirBag - Front & Rear Dr/Pass

Check Digit: 0-9 or "X"

This is a calculated digit per NHTSA code to determine the validity of a complete Vehicle Identification Number.

- Must follow steps in order!**
- 1- Model Year (position #10)
Locate & use appropriate card.
 - 2- Model Code (positions #7 & #8)
 - 3- Vehicle Series (position #4)
 - 4- Engine Code (position #5)

Model Year

- A = 1980
- B = 1981
- C = 1982
- D = 1983
- E = 1984
- F = 1985
- G = 1986
- H = 1987
- J = 1988
- K = 1989
- L = 1990
- M = 1991
- N = 1992
- P = 1993
- R = 1994
- S = 1995
- T = 1996
- V = 1997
- W = 1998
- X = 1999

SERIES:
USA

B = Golf 2dr GL
 New Beetle GL
 C = Cabrio GL
 New Beetle GLS
 D = Cabrio GLS
 GTI 2dr
 New Beetle GLX
 EuroVan 3dr Camper
 G = Golf 4dr GLS
 K = EuroVan 3dr GLS
 M = Passat 4dr GLS
 EuroVan 3dr MV
 N = Passat GLS Wagon
 EuroVan 3dr Weekender
 P = Passat 4dr GLX
 R = Jetta 4dr GL
 S = Jetta 4dr GLS
 V = Passat GLX Wagon

Canada

A = Passat 4dr GLS
 B = Passat Wagon GLS/X
 Golf 2dr GL
 New Beetle GL
 C = Cabrio GL
 New Beetle GLS
 Passat 4dr GLX
 D = Cabrio GLS
 GTI 2dr
 New Beetle GLX
 EuroVan 3dr Camper
 G = Golf 4dr GLS
 K = EuroVan 3dr GLS
 M = EuroVan 3dr MV
 N = EuroVan 3dr MV
 Weekender
 R = Jetta 4dr GL
 S = Jetta 4dr GLS
 T = Jetta 4dr GLX

2000 Volkswagen V.I.N. decoder

Country of origin	Manufacturer	Vehicle Type	Series	Engine	Restraint System	Model (position 7 & 8)	Check Digit	Model Year	Assembly Plant	Sequential serial number (position 12 - 17)							
1	2	3	4	5	6	7	8	9	10	11	12	13	14	15	16	17	
Country Code Volkswagen	W	Type W	D	D	See Chart	1	C	0-9 or X 2000	M	8	E = Emden M = Mexico	0	3	4	5	6	H = Hannover W = Wolfsburg
W = Car 2 = MPV		W = Europe 3 = Mexico		<p>MODEL:</p> <p> 1C = New Beetle 1E = Cabrio 1J = Golf /GTI 3B = Passat 70 = EuroVan 9M = Jetta </p>													
<p> A = 4cyl 2.0L (G) Golf / Jetta / GTI / Beetle 115HP A = 4cyl 1.8L (G) Passat 150HP C = 4cyl 2.0L (G) Golf / Jetta / Cabrio / Beetle 115HP D = 6cyl 2.8L (G) Passat 190HP D = 4cyl 1.8L (G) New Beetle 148HP E = 4cyl 2.8L (G) Jetta, Golf & GTI 174HP F = 4cyl 1.9L (Diesel) Golf / Jetta / GTI / Beetle 90HP H = 6cyl 2.8L (G) EuroVan 140HP </p>																	

'98 & Prior Restraints:

- 0 Active - Dr/Pass.
 2 Passive
 W/manual lap.
 4 ELRA
 W/manual lap.
 5 AirBag - Dr.
 Active - Dr/Pass.
 6 AirBag - Dr/Pass.
 Side AirBag Front
 Dr/Pass.
 Active - Dr/Pass.
 8 AirBag - Dr/Pass.
 Active - Dr/Pass.

NOTES:

All '98 Passat and New Beetle Vehicles are equipped with depowered AirBags.

Dr = Driver Side
 Pass = Passenger Side

Volkswagen V.I.N. decoder

Country of origin	Manufacturer	Vehicle Type	Series	Engine	Restraint System	Model (position 7 & 8)	Check Digit	Model Year	Assembly Plant	Sequential serial number (position 12 - 17)						
1	2	3	4	5	6	7	8	9	10	11	12	13	14	15	16	17
<p>1999 / 2000 Restraints:</p> <p> Golf, GTI, Jetta, Cabrio, New Beetle & New Jetta: 2 AirBag Dr/Pass (Depowered) Side AirBag - Front Dr/Pass } 2000 Model Year 6 AirBag Dr/Pass (Standard) Side AirBag - Front Dr/Pass 8 AirBag - Dr/Pass. Active - Dr/Pass </p> <p> Passat, EuroVan, New Golf, New GTI: 2 or 8 AirBag - Dr/Pass. Active - Dr/Pass (Depowered) 3 or 6 AirBag Dr/Pass (Depowered) Side AirBag - Front Dr/Pass 4 AirBag Dr/Pass (Depowered) Side AirBag - Front & Rear Dr/Pass } 2000 Model Year </p>										<p>Check Digit: 0-9 or "X"</p> <p>This is a calculated digit per NHTSA code to determine the validity of a complete Vehicle Identification Number.</p>						
<p>Must follow steps in order!</p> <ol style="list-style-type: none"> 1- Model Year (position #10) Locate & use appropriate card. 2- Model Code (positions #7 & #8) 3- Vehicle Series (position #4) 4- Engine Code (position #5) 										<p>Model Year</p> <p> A = 1980 B = 1981 C = 1982 D = 1983 E = 1984 F = 1985 G = 1986 H = 1987 J = 1988 K = 1989 L = 1990 M = 1991 N = 1992 P = 1993 R = 1994 S = 1995 T = 1996 V = 1997 W = 1998 X = 1999 Y = 2000 </p>						



2001 Volkswagen V.I.N. decoder

SERIES:

A = Passat 4dr GLS
B = Cabrio GL
 Golf 2dr GL
 New Beetle GL
 Passat 4dr GLX
C = Cabrio GLS
 New Beetle GLS
D = Cabrio GLS
 GTI 2dr GLS
 New Beetle GLX
 Passat 4dr GLS 4Motion
E = Passat 4dr GLX 4Motion
 EuroVan 3dr Camper
 New Beetle Sport
G = Golf 4dr GLS
H = Passat GL S Wagon
J = Passat GLX Wagon
K = EuroVan 3dr GLS
 Passat GLS Wagon 4Motion
L = Passat GLX Wagon 4Motion
M = EuroVan 3dr MV
N = EuroVan 3dr MV Weekender
P = GTI 2dr GLX
 Jetta Wolfsburg Edition
 New Passat 4dr GLS

R = Jetta 4dr GL
 Jetta Wagon GL ***
 New Passat 4dr GLX
S = Jetta 4dr GLS
 Jetta Wagon GLS ***
 New Passat 4dr GLS,
 4Motion
T = Jetta 4dr GLX
 Jetta Wagon GLX ***
 New Passat 4dr GLX,
 4Motion
V = New Passat GLS,
 Wagon
W = New Passat GLX,
 Wagon
X = New Passat GLS,
 4Motion Wagon
Y = New Passat GLX,
 4Motion Wagon
 *** US only for 2001

Country of origin	Manufacturer	Vehicle type	Series	Engine	Restraint system	Model (position 7&8)	Check digit	Model year	Assembly plant	Sequential serial number (position 12 - 17)								
1	2	3	4	5	6	7	8	9	10	11	12	13	14	15	16	17		
		V	W	D	D	4	1	C	5	1	M	8	0	3	E	4	5	6
Country Code		Type		See chart		0-9 or X		2001		4 = Curitiba E = Emden H = Hannover M = Mexico P = Mosel W = Wolfsburg								
V = Volkswagen B = Brazil W = Car 3 = MPV 2 = Incomplete		B, K, S, & T = 4cyl 2.0L (G)Golf / Jetta / GTI / Beetle . . . 115HP (different emission groups) B = 6cyl 2.8L (G) EuroVan 201HP C = 4cyl 1.8L (G)Passat / Golf/GTI/Jetta/Beetle150HP C = 4cyl 2.0L (G) Cabrio 115HP D = 4cyl 1.8L (G) Golf / Jetta / GTI / Beetle 150HP G = 6cyl 2.8L (G) Golf / Jetta / GTI / Beetle 174HP H = 6cyl 2.8L (G) Passat 190HP P = 4cyl 1.9L (Diesel) Golf / Jetta / GTI / Beetle 90HP																
W = Europe 3 = Mexico 9 = Brazil		MODEL: 1C = New Beetle 1J = Golf / GTI 1V = Cabrio 3B = Passat new Passat 70 = EuroVan 9M = Jetta																

Revised May 2001

2001 Volkswagen V.I.N. Decoder

Country of origin	Manufacturer	Vehicle type	Series	Engine	Restraint system	Model (position 7&8)	Check digit	Model year	Assembly plant	Sequential serial number (position 12 - 17)						
1	2	3	4	5	6	7	8	9	10	11	12	13	14	15	16	17



This is the sequential production number of the specific vehicle.

Model Year:

B = 1981
C = 1982
D = 1983
E = 1984
F = 1985
G = 1986
H = 1987
J = 1988
K = 1989
L = 1990
M = 1991
N = 1992
P = 1993
R = 1994
S = 1995
T = 1996
V = 1997
W = 1998
X = 1999
Y = 2000
1 = 2001

2000 / 2001 Restraints:

All models (except EuroVan):

- 2 AirBag Dr/Pass
- Side AirBag - Front Dr/Pass
- 6 AirBag Dr/Pass (Standard)
- Side AirBag - Front Dr/Pass
- Side Curtain AirBag

EuroVan:

- 4 AirBag Dr/Pass
- Side AirBag - Front & Rear Dr/Pass

CheckDigit: 0-9 or "X"

This is a calculated digit per NHTSA code to determine the validity of a complete Vehicle Identification Number.

Must follow steps in order!

- 1- Model Year (position #10)
 Locate & use appropriate card.
- 2- Model Code (positions #7 & 8)
- 3- Vehicle Series (position #4)
- 4- Engine Code (position #5)

SERIES:

B = Cabrio GL
 Golf 2dr GL
 NewBeetle GL
C = Cabrio GLS
 NewBeetle GLS
D = Cabrio GLX
 GTI 2dr GLS
 NewBeetle GLX
E = EuroVan 3dr Camper
 NewBeetle Sport
F = Golf 4dr GL
 NewBeetle Turbo S
G = Golf 4dr GLS
K = EuroVan 3dr GLS
M = EuroVan 3dr MV
N = EuroVan 3dr MV Weekender
P = Passat 4dr GLS
R = Jetta 4dr GL
 Jetta Wagon GL (US only)
 Passat 4dr GLX
S = Jetta 4dr GLS
 Jetta Wagon GLS (US only)
 Passat 4dr GLS 4Motion
T = Jetta 4dr GLX
 Jetta Wagon GLX (US only)
 Passat 4dr GLX 4Motion
U = Passat W8 4Motion
V = Passat Wagon GLX
W = Passat Wagon GLX
X = Passat Wagon GLS
 4Motion
Y = Passat Wagon GLX
 4Motion
Z = Passat W8 4Motion
 Wagon

2002 Volkswagen V.I.N. Decoder
2 = 2002
**Sequential
serial number
(position 12 - 17)**

Country of origin	Manufacturer	Vehicle type	Series	Engine	Restraint system	Model (position 7 & 8)	Check digit	Model year	Assembly plant							
1	2	3	4	5	6	7	8	9	10	11	12	13	14	15	16	17
3	V	W	D	D	4	1	C	5	2	M	8	0	3	4	5	6
Country Code											4 = Curitiba E = Ermden H = Hannover M = Mexico P = Mosel W = Wolfsburg					
Country Code											MODEL: 1C = NewBeetle 1J = Golf / GTI Jetta Wagon 1V = Cabrio 3B = Passat 70 = EuroVan 9M = Jetta					
Country Code											B = 4cyl 2.0L (Gas) Golf / Jetta / GTI / Beetle 115HP B = 6cyl 2.8L (Gas) EuroVan 201HP C = 4cyl 2.0L (Gas) Cabrio 115HP D = 4cyl 1.8L (Gas) Golf / Jetta / GTI / Beetle 150HP D = 4cyl 1.8L (Gas) Passat 170HP E = 4cyl 1.8L (Gas) Golf / Jetta / GTI / Beetle 180HP G = 6cyl 2.8L (Gas) Golf / Jetta / GTI / Beetle 174HP H = 6cyl 2.8L (Gas) Golf / Jetta / GTI / Beetle 201HP H = 6cyl 2.8L (Gas) Passat 190HP K = 4cyl 2.0L (Gas) Golf / Jetta / GTI / Beetle 115HP K = V8 4.0L (Gas) Passat W8 275HP P = 4cyl 1.9L (Diesel) Golf / Jetta / GTI / Beetle 90HP					
Country Code											Oct. 2001					

2002 Volkswagen V.I.N. Decoder

Country of origin	Manufacturer	Vehicle type	Series	Engine	Restraint system	Model (position 7 & 8)	Check digit	Model year	Assembly plant	Sequential serial number (position 12 - 17)						
1	2	3	4	5	6	7	8	9	10	11	12	13	14	15	16	17


Model Year:

D = 1983
 E = 1984
 F = 1985
 G = 1986
 H = 1987
 J = 1988
 K = 1989
 L = 1990
 M = 1991
 N = 1992
 P = 1993
 R = 1994
 S = 1995
 T = 1996
 V = 1997
 W = 1998
 X = 1999
 Y = 2000
 1 = 2001
 2 = 2002
 3 = 2003

2002 Restraints:

- 2 AirBag - Active - Dr/Pass
 Side Impact AirBag - Front - Dr/Pass
 4 AirBag - Active - Dr/Pass
 6 AirBag - Active - Dr/Pass
 Side Curtain AirBags
 Side Impact AirBag - Front - Dr/Pass

CheckDigit:

0-9 or "X"
 This is a calculated digit per NHTSA code to determine the validity of a complete Vehicle Identification Number.

Must follow steps in order!

- 1- Model Year (position #10)
Locate & use appropriate card.
- 2- Model Code (positions #7 & 8)
- 3- Vehicle Series (position #4)
- 4- Engine Code (position #5)

2003 Volkswagen V.I.N. Decoder

SERIES:

- | | |
|--|---|
| B = Golf 2dr GL***
New Beetle GL***
New Beetle Conv. GL | T = Jetta Wagon GLS
Passat 4dr GLX 4Motion |
| C = New Beetle GLS
New Beetle Conv. GLS | U = Passat W8 4Motion
V = Jetta 4dr GLI |
| D = New Beetle Conv. GLX
GTI 2dr GLS
New Beetle GLX | W = Passat Wagon GLX
Y = Passat Wagon GLX
4Motion |
| E = EuroVan 3dr Camper
Golf 4dr CL** | Z = Passat W8 4Motion
Wagon |
| F = Golf 4dr GL
New Beetle Turbo S*** | |
| G = Golf 4dr GLS | |
| K = EuroVan 3dr GLS
GTI 2dr Jubilee II | |
| M = Passat GL***
EuroVan 3dr MV | |
| N = EuroVan 3dr MV Weekender
Passat GL Wagon*** | |
| P = Passat 4dr GLS | |
| R = Jetta 4dr GL***
Jetta Wagon GL***
Passat 4dr GLX | ** CAN Only
*** US Only |
| S = Jetta 4dr GLS
Jetta Wagon GLS | |

Country of origin	Manufacturer	Vehicle type	Series	Engine	Restraint system	Model (position 7&8)		Check digit	Model year	Assembly plant	<div style="border: 2px solid orange; border-radius: 50%; padding: 10px; display: inline-block;"> <h1 style="margin: 0;">3 = 2003</h1> </div> Sequential serial number (position 12 - 17)					
1	2	3	4	5	6	7	8	9	10	11	12	13	14	15	16	17
W	V	W	U	K	6	3	B	7	3	P	0	3	2	1	7	5
WVW = Europe Pass. Car WV2 = Europe MPV 3VW = Mexico Pass. Car 9BW = Brazil Pass. Car				↓ See back		↙ Y		0-9 or X	2003	↘	4 = Curitiba E = Emden H = Hannover M = Mexico P = Mosel W = Wolfsburg					
A = 4cyl 2.0L (Gas) Jetta 115HP B = 6cyl 2.8L (Gas) EuroVan 201HP D = 4cyl 1.8L (Gas) Beetle 150HP D = 4cyl 1.8L (Gas) Passat 170HP E = 4cyl 1.8L (Gas) Jetta / GTI / Beetle 180HP H = 6cyl 2.8L (Gas) Jetta / GTI 200HP H = 6cyl 2.8L (Gas) Passat 190HP K = 4cyl 2.0L (Gas) Golf / Jetta / Beetle 115HP K = V8 4.0L (Gas) Passat W8 270HP P = 4cyl 1.9L (Diesel) Golf / Jetta / GTI / Beetle 90HP											MODEL: 1C = New Beetle 1J = Golf / GTI / Jetta Wagon 1Y = New Beetle Convertible 3B = Passat 70 = EuroVan 9M = Jetta					
← Oct. 2003																

2003 Volkswagen V.I.N. Decoder

Country of origin	Manufacturer	Vehicle type	Series	Engine	Restraint system	Model (position 7&8)	Check digit	Model year	Assembly plant	Sequential serial number (position 12 - 17)						
1	2	3	4	5	6	7	8	9	10	11	12	13	14	15	16	17
											This is the sequential production number of the specific vehicle.					



Model Year:

- D = 1983
- E = 1984
- F = 1985
- G = 1986
- H = 1987
- J = 1988
- K = 1989
- L = 1990
- M = 1991
- N = 1992
- P = 1993
- R = 1994
- S = 1995
- T = 1996
- V = 1997
- W = 1998
- X = 1999
- Y = 2000
- 1 = 2001
- 2 = 2002
- 3 = 2003

2002 - 2003 Restraints:

- 2 AirBag - Active - Dr/Pass
Side Impact AirBag - Front - Dr/Pass
- 4 AirBag - Active - Dr/Pass
- 6 AirBag - Active - Dr/Pass
Side Curtain AirBags
Side Impact AirBag - Front - Dr/Pass

CheckDigit: 0-9 or "X"

This is a calculated digit per NHTSA code to determine the validity of a complete Vehicle Identification Number.

Must follow steps in order!

- 1- Model Year (position #10)
Locate & use appropriate card.
- 2 - Model Code (positions #7 & 8)
- 3 - Vehicle Series (position #4)
- 4 - Engine Code (position #5)

2004 Volkswagen V.I.N. Decoder

SERIES:

- | | |
|--|--|
| A = Phaeton 5 Seat Position | S = Jetta GLS
Jetta Wagon GLS |
| B = Golf 2dr GL***
New Beetle GL***
New Beetle Conv. GL***
Phaeton 4 Seat Position
Touareg V6 | T = Passat GLX
4 Motion
Jetta Wagon w/
Premium Package** |
| C = New Beetle GLS
New Beetle Conv. GLS
Touareg V8 | U = Passat W8 4Motion
V = Jetta GLI
Passat Wagon GLS |
| D = New Beetle Conv. GLX
GTI 2dr
New Beetle GLX**
New Beetle Conv. GLX | W = Passat Wagon GLX
Y = Passat Wagon GLX
4Motion
Z = Passat W8 4Motion
Wagon
Touareg V6 |
| E = Golf 4dr CL**
Touareg V8 w/ Air suspension | |
| F = Golf 4dr GL
New Beetle Turbo S***
Touareg V8x w/ Air suspension | |
| G = Golf 4dr GLS | |
| K = R32 2dr***
Passat W8 4Motion w/SG# | |
| L = Passat W8 Wagon 4Motion w/SG# | |
| M = Passat GL*** | |
| N = Passat GL Wagon*** | |
| P = Passat GLS | |
| R = Jetta GL***
Jetta Wagon GL***
Passat GLX | |
- ** CAN Only**
***** US Only**
Sport Group (Optional Equip.)

Country of origin	Manufacturer	Vehicle type	Series	Engine	Restraint system	Model (position 7 & 8)	Check digit	Model year	Assembly plant	4 = 2004 Sequential serial number (position 12 - 17)						
1	2	3	4	5	6	7	8	9	10	11	12	13	14	15	16	17

3 V W V H 6 9 M 4 4 M 0 0 8 8 9 8

WWW = Europe Pass. car
WVG = Europe SUV
3WW = Mexico Pass. car
9BW = Brazil Pass. Car

See back

0-9 or X
2004

4 = Curitiba D = Bratislava
H = Hannover P = Mosel
8 = Dresden E = Emden
M = Mexico W = Wolfsburg

- MODEL:**
- A = 4cyl 2.0L (Gas) Jetta 115HP
 - C = 6cyl 3.2L (Gas) Touareg 220HP
 - D = 4cyl 1.8L (Gas) Beetle 150HP / Passat 170HP
 - E = 4cyl 1.8L (Gas) Jetta / GTI / R32 / Beetle 180HP
 - E = 4cyl. 2.0L (Diesel) Passat 134 HP
 - F = 8cyl 4.2L (Gas) Phaeton 335HP
 - G = 6cyl 3.2L (Gas) Jetta Wagon / Golf / GTI / R32 240HP
 - H = 6cyl 2.8L (Gas) Jetta / Golf / GTI / R32 200HP
 - H = 6cyl 2.8L (Gas) Passat 190HP
 - H = 12cyl 6.0L (Gas) Phaeton 420 HP
 - H = V10 5.0L (Diesel) Touareg 310HP
 - K = 4cyl 2.0L (Gas) Jetta / Beetle 115HP
 - K = W8 4.0L (Gas) Passat W8 270HP
 - L = 4cyl. 2.0L (Gas) Golf / GTI / Jetta Wagon /R32 115HP
 - M = 4cyl. 2.0L (Gas) Beetle 115HP
 - M = 8cyl. 4.2L (Gas) Touareg 310 HP
 - R = 4cyl 1.9L (Diesel) Golf / Jetta / GTI / R32 / Beetle 100HP

- MODEL:**
- 1C = New Beetle
 - 1J = Golf / GTI / R32
Jetta Wagon
 - 1Y = New Beetle
Convertible
 - 3B = Passat
 - 3D = Phaeton
 - 7L = Touareg
 - 9M = Jetta

2004 Volkswagen V.I.N. Decoder

Country of origin	Manufacturer	Vehicle Type	Series	Engine	Restraint System	Model (position 7 & 8)	Check Digit	Model Year	Assembly Plant	Sequential serial number (position 12 - 17)						
1	2	3	4	5	6	7	8	9	10	11	12	13	14	15	16	17
											This is the sequential production number of the specific vehicle.					



Model Year

- D = 1983
- E = 1984
- F = 1985
- G = 1986
- H = 1987
- J = 1988
- K = 1989
- L = 1990
- M = 1991
- N = 1992
- P = 1993
- R = 1994
- S = 1995
- T = 1996
- V = 1997
- W = 1998
- X = 1999
- Y = 2000
- 1 = 2001
- 2 = 2002
- 3 = 2003
- 4 = 2004

2004 Restraints:

- All Active - Dr/Pass
Front Air Bag - Dr/Pass
- 2 Side Impact Air Bags - Front
- 3 Dual Stage Front Air Bags - Dr/Pass
Side Impact Air Bags - Front
- 6 Side Curtain Air Bags
Side Impact Air Bags - Front
- 7 Dual Stage Front Air Bags
Side Impact Air Bags - Front
Side Curtain Air Bags

Check Digit: 0-9 or "X"

This is a calculated digit per NHTSA code to determine the validity of a complete Vehicle Identification Number.

Must follow steps in order!

- 1- Model Year (position #10)
Locate & use appropriate card.
- 2- Model Code (positions #7 & 8)
- 3- Vehicle Series (position #4)
- 4- Engine Code (position #5)

2005 Volkswagen V.I.N. Decoder

SERIES:

- | | |
|--|--|
| A = Phaeton 5 Seat Position
Passat GLS # | R = Jetta GL***
Jetta Wagon GL*** |
| B = Golf 2dr GL***
New Beetle GL***
New Beetle Conv. GL***
Phaeton 4 Seat Position
Touareg V6
Passat GLS 4Motion # | S = Jetta GLS / GLI
Jetta Wagon GLS
new Jetta (package 1) |
| C = New Beetle GLS
New Beetle Conv. GLS
Touareg V8
Passat GLS Wagon | T = Passat GLX
4 Motion |
| D = New Beetle Conv. GLX**
GTI
Passat GLS 4Motion Wagon
new Jetta (package 2) | W = Passat Wagon GLX
Y = Passat Wagon GLX
4Motion |
| E = Golf 4dr CL** | Z = Touareg V6/V8 with
Sport Suspension |
| F = Golf 4dr GL
New Beetle Turbo S*** | |
| G = Golf 4dr GLS | |
| L = Touareg V6 w/ Air suspension | |
| M = Passat GL***
Touareg V8 w/ Air suspension | |
| N = Passat GL Wagon*** | |
| P = Touareg V10 w/ Air
suspension
new Jetta (value edition)*** | |
- ** CAN Only
*** US Only
Early Production may have used P

Country of origin	Manufacturer	Vehicle type	Series	Engine	Restraint system	Model (position 7 & 8)	Check digit	Model year	Assembly plant	Sequential serial number (position 12 - 17)						
1	2	3	4	5	6	7	8	9	10	11	12	13	14	15	16	17

5 = 2005

WWW = Europe Pass. Car
 WVG = Europe SUV
 3WV = Mexico Pass. Car
 9BW = Brazil Pass. Car

- MODEL:**
- 1C = New Beetle
 - 1J = Golf / GTI / Jetta Wagon
 - 1Y = New Beetle Convertible
 - 3B = Passat
 - 3D = Phaeton
 - 7L = Touareg
 - 9M = Jetta
 - 1K = new Jetta
- * Brazilian Golf displays as 9B in VW systems

- 4 = Curitiba
- H = Hannover
- 8 = Dresden
- M = Mexico
- D = Bratislava
- P = Mosel
- E = Emden
- W = Wolfsburg

June 2005

* Early production Passat vehicles may use the 'H' instead of 'U'

2005 Volkswagen V.I.N. Decoder

Country of origin	Manufacturer	Vehicle type	Series	Engine	Restraint system	Model (position 7 & 8)	Check digit	Model year	Assembly plant	Sequential serial number (position 12 - 17)						
1	2	3	4	5	6	7	8	9	10	11	12	13	14	15	16	17

This is the sequential production number of the specific vehicle.

Model Year

- E = 1984
- F = 1985
- G = 1986
- H = 1987
- J = 1988
- K = 1989
- L = 1990
- M = 1991
- N = 1992
- P = 1993
- R = 1994
- S = 1995
- T = 1996
- V = 1997
- W = 1998
- X = 1999
- Y = 2000
- 1 = 2001
- 2 = 2002
- 3 = 2003
- 4 = 2004
- 5 = 2005

2005 Restraints:

- All Active - Dr/Pass
Front Air Bag - Dr/Pass
- 2 Side Impact Air Bags - Front
- 3 Advanced Front Air Bags
Side Impact Air Bags - Front
- 6 Side Impact Air Bags - Front
Side Curtain Air Bags
- 7 Advanced Front Air Bags
Side Impact Air Bags - Front
Side Curtain Air Bags
- 9 Dual Stage Front Air Bags
Side Impact Air Bags - Fr. Rr.
Side Curtain Air Bags
- 0 Advanced Front Air Bags
Side Impact Air Bags - Fr. Rr.
Side Curtain Air Bags
(Phaeton only)

Check Digit: 0-9 or "X"

This is a calculated digit per NHTSA code to determine the validity of a complete Vehicle Identification Number.

Must follow steps in order!

- 1- Model Year (position #10)
Locate & use appropriate card.
- 2- Model Code (positions #7 & 8)
- 3- Vehicle Series (position #4)
- 4- Engine Code (position #5)

2006 Volkswagen VIN Decoder

SERIES:

A= Jetta 2.0T Passat 2.0T auto. trans Passat 3.6L auto. trans Phaeton w/5 seating pos. Rabbit 2dr. man. trans**	K= Jetta 4dr. 2.0T w/Pkg. 1** Jetta 4dr. 2.0T w/Luxury Pkg* Passat 2.0T manual trans w/ Luxury Package*
B= Golf 2dr. GL** Passat 3.6L 4Motion Touareg V6 Phaeton w/4 seating pos. Rabbit 2dr auto. trans	L= Touareg V6 w/Air susp. M= Jetta 2.0T w/Pkg. 2** Jetta 4dr 2.0T w/Leather Pkg*
C= Passat 3.6L w/Sport Pkg. Jetta 4dr TDI Special Edition w/sunroof** Touareg V8 Rabbit 4dr. man. trans	N= Jetta 4dr. 2.0T w/Pkg 3** Jetta 4dr w/Premium Pkg* P= Jetta 2.5L Value Edition** New Beetle New Beetle Convertible Touareg V10 w/Air susp.
D= Jetta 2.5/TDI w/Pkg. 2 Jetta 4dr. w/Leather Pkg.* GTI 2 dr. Passat 4Motion Sport Pkg. Rabbit 4dr. auto. trans	R= Jetta 4 dr. 2.5L /TDI New Beetle/New Beetle Conv w/Pkg. 1** New Beetle/New Beetle Conv w/ Luxury Package*
E= Passat 2.0T/3.6L auto trans w/Luxury Pkg. New GTI man. trans Golf 4dr. CL*	S= Jetta 2.5L/TDI w/Pkg. 1** Jetta 4dr w/Luxury Pkg* Jetta Wagon 4dr GLS* New Beetle/ New Beetle Conv w/Pkg. 2** New Beetle/New Beetle Conv w/Leather Package*
F= Golf 4dr. GL Passat 4Motion w/ Luxury Pkg. New GTI auto. trans Jetta 4dr TDI Special Ed.**	T= Jetta 4dr. GLI** W= Jetta 4dr. GLI w/Pkg. 1** X= Jetta 4dr. GLI w/Pkg. 2** Z= Touareg V6/V8 w/Sport susp.
G= Golf 4dr. GLS Passat 2.0T man. trans	

Revised: October 2006

Country of origin	Manufacturer	Vehicle type	Series	Engine	Restraint system	Model	(position 7&8)	Check digit	Model year	Assembly plant	<div style="background-color: #800040; color: white; border-radius: 50%; padding: 10px; display: inline-block; font-size: 24px; font-weight: bold;">6 = 2006</div> Sequential serial number (position 12 - 17)						
1	2	3	4	5	6	7	8	9	10	11	12	13	14	15	16	17	
W	V	W	F	R	7	1	F	7	6	M	0	0	0	3	4	8	
WWW = Europe Pass. Car WVG = Europe S.U.V. 3VW = Mexico Pass. Car 9BW = Brazil Pass. Car			See back			O-9 or X 2006			PLANT 4 = Curitiba H = Hannover 8 = Dresden M = Mexico D = Bratislava P = Mosel E = Emden W = Wolfsburg								
MODEL 1C = New Beetle 1J = Golf / GTI / Jetta Wagon* 1K = Jetta / New GTI / Rabbit 1Y = New Beetle Convertible 3C = Passat 3D = Phaeton 7L = Touareg						ENGINE E = 4 cyl 1.8L 180hp Golf/GTI F = 5 cyl 2.5L 150hp Jetta/New Beetle/ New Beetle Convertible 8 cyl 4.2L 335hp Phaeton G = 5 cyl 2.5L 150hp Jetta/New Beetle/ New Beetle Convertible** 6 cyl 3.2L 240hp Touareg J = 4 cyl 2.0L 200hp Jetta K = 4 cyl 2.0L 200hp Passat 12 cyl 6.0L 450hp Phaeton L = 4 cyl 2.0L 115hp Golf/GTI M = 8 cyl 4.2L 310hp Touareg						R = 4 cyl 1.9L 100hp Golf/GTI/ New Beetle/NB Conv. 5 cyl 2.5L 150hp New GTI / Rabbit** S = 5 cyl 2.5L 150hp New GTI / Rabbit** T = 4 cyl 1.9L 100hp Jetta 10 cyl 5.0L 310hp Touareg U = 6 cyl 3.6L 280hp Passat V = 4 cyl 2.0L 200hp New GTI / Rabbit** W = 5 cyl 2.5L 150hp New Beetle/ New Beetle Conv.					

*CAN Only
** US Only

2006 Volkswagen V.I.N. Decoder

Country of origin	Manufacturer	Vehicle type	Series	Engine	Restraint system	Model (position 7&8)	Check digit	Model year	Assembly plant	Sequential serial number (position 12 - 17)						
1	2	3	4	5	6	7	8	9	10	11	12	13	14	15	16	17

This is the sequential production number of the specific vehicle.



Model Year:

L = 1990
M = 1991
N = 1992
P = 1993
R = 1994
S = 1995
T = 1996
V = 1997
W = 1998
X = 1999
Y = 2000
1 = 2001
2 = 2002
3 = 2003
4 = 2004
5 = 2005
6 = 2006
7 = 2007
8 = 2008
9 = 2009

Must follow steps in order!

- 1- Model Year (position #10)
Locate & use appropriate card.
- 2- Model Code (positions #7 & 8)
- 3- Vehicle Series (position #4)
- 4- Engine Code (position #5)

2006 Restraints

- | | |
|--|--|
| <p>All
Active - Dr/Pass
Front Air Bag - Dr/Pass</p> <p>3 Advanced Front Air Bags
Side Impact Air Bags - Front</p> <p>6 Side Impact Air Bags - Front
Side Curtain Air Bags</p> <p>7 Advanced Front Air Bags
Side Impact Air Bags - Front
Side Curtain Air Bags</p> <p>2 (Canada Only)
Side Impact Air Bags - Front</p> | <p>8 or 9 (Jetta Only)
Advanced Front Air Bags
Side Impact Air Bags - Fr. Rr.
Side Curtain Air Bags</p> <p>9 (Passat / Golf / GTI Only)
Advanced Front Air Bags
Side Impact Air Bags - Fr. Rr.
Side Curtain Air Bags</p> <p>0 (Phaeton Only)
Advanced Front Air Bags
Side Impact Air Bags - Fr. Rr.
Side Curtain Air Bags</p> |
|--|--|

Check Digit 0-9 or "X"

This is a calculated digit per NHTSA code to determine the validity of a complete Vehicle Identification Number.

2007 Volkswagen VIN Decoder

SERIES:

- A=** Jetta 2.0T
Rabbit 2dr. man. trans
Eos man. trans
Passat 2.0T auto. trans
Passat 3.6L auto. trans
- B=** Jetta 2.0T w/Pkg. 1*
Rabbit 2dr. auto. trans
Eos auto. trans
Passat 3.6L 4motion
Touareg V6
- C=** Rabbit 4dr. man. trans
Passat 2.0T auto w/Sport*
Passat 3.6L auto w/Sport
Eos man. trans w/Sport
Touareg V8
- D=** Jetta 2.5 w/Pkg. 2
& sunroof*
Jetta 2.5 w/Leather**
Rabbit 4dr. auto. trans
Eos auto trans w/Sport
Passat 4motion w/Sport
- E=** GTI 2dr. man. trans
Passat 2.0T auto w/Luxury
Passat 3.6 auto w/Luxury Pkg*
Eos man. trans w/Luxury**
City Golf 4dr**
- F=** Jetta 4dr Wolfsburg Edition*
GTI 2dr. auto. trans
Passat 4motion w/Luxury*
Eos auto. trans w/Luxury
- G=** GTI 4dr. man. trans
Jetta 4dr.*
Passat 2.0T man. trans
Passat 2.0T man. trans
w/Sport Pkg.*
- J=** Passat auto. trans*
Jetta 2.5 w/Pkg. 2*
Jetta 2.0T w/Pkg. 2*
- K=** Jetta 2.0T w/Luxury Pkg**
Passat 2.0T man. trans
w/Luxury Pkg.
- L=** Passat Wagon 2.0T/3.6L auto trans
Touareg V6 w/Air susp.*
Touareg V6 w/Luxury Plus **
- M=** Jetta 2.0T w/Leather**
Passat Wagon 3.6L 4motion
Touareg V8 w/Air susp.*
Touareg V8 w/Luxury Plus**
- N=** Jetta 2.5L w/Premium**
Jetta 2.0T w/Premium**
Passat Wagon 2.0T man trans**
- P=** Jetta 2.5L*
New Beetle 2.5L
New Beetle Convertible 2.5L
Passat Wagon 2.0T w/Sport Pkg.*
Passat Wagon 3.6L w/Sport Pkg.
Touareg V10 w/Air susp.
- R=** Jetta 2.5L**
Jetta 2/5L w/Pkg. 1*
New Beetle 2.5L w/Luxury**
New Beetle 2.5L w/Pkg. 1*
New Beetle Convertible w/Pkg. 1*
New Beetle Convertible w/Luxury**
Passat Wagon 4motion w/Sport
- S=** Jetta 2.5L w/Pkg. 1 & sunroof*
Jetta 2.5L w/Luxury**
New Beetle 2.5L w/Pkg. 2*
New Beetle 2.5L w/Leather**
New Beetle Conv. 2.5L w/Pkg. 2*
New Beetle Conv. 2.5L w/Leather**
- T=** Jetta GLI
Passat Wagon 2.0T auto w/Luxury
Passat Wagon 3.6 auto. w/Luxury*
City Jetta 4dr.**
- U=** Passat manual*
- V=** Passat Wagon 4motion w/Luxury*
- W=** Jetta GLI w/Pkg. 1*
Jetta GLI w/sunroof**
Passat Wagon 2.0T man. w/Luxury**
- X=** Jetta GLI w/Pkg. 2*
Jetta GLI w/Leather**
- Z=** Touareg V6/V8 w/Sport susp.

Country of origin	Manufacturer	Vehicle type	Series	Engine	Restraint system	Model (position 7&8)	Check digit	Model year	Assembly plant	7 = 2007 Sequential serial number (position 12 - 17)						
1	2	3	4	5	6	7	8	9	10	11	12	13	14	15	16	17
W	V	W	F	A	7	1	F	7	7	V	0	0	0	3	4	8

WWW = Europe Pass. Car
WVG = Europe S.U.V.
3WV = Mexico Pass. Car
9BW** = Brazil Pass. Car

See back

0-9 or X

2007

PLANT

4 = Curitiba	H = Hannover	W = Wolfsburg
D = Bratislava	M = Mexico	V = Portugal
E = Emden	P = Mosel	

A= 4 cyl 2.0L 200hp Eos
B= 6 cyl 3.2L 250hp Eos
 8 cyl 4.2L 350hp Touareg
E= 6 cyl 3.6L 276hp Touareg
F= 5 cyl 2.5L 150hp Jetta / New Beetle /
 New Beetle Convertible
G*= 5 cyl 2.5L 150hp Jetta / New
 Beetle / New Beetle Convertible
J= 4 cyl 2.0L 200hp Jetta / New Beetle /
 New Beetle Convertible
K= 4 cyl 2.0L 200hp Passat
K=** 4 cyl 2.0L 115hp City Golf / City
 Jetta
L=** 4 cyl 2.0 115hp City Golf / City Jetta
M=** 5 cyl 2.5L 150hp Rabbit / GTI
R= 5 cyl 2.5L 150hp Rabbit / GTI
S= 5 cyl 2.5L 150hp Rabbit / GTI
T= 10 cyl 5.0L 310hp Touareg Diesel
U= 6 cyl 3.6L 280hp Passat
V= 4 cyl 2.0L 200hp Rabbit / GTI
W= 5 cyl 2.5L 150hp Jetta / New Beetle /
 New Beetle Convertible

MODEL

1C = New Beetle
1F = Eos
1J** = City Golf / City Jetta
1K = Jetta / GTI / Rabbit
1Y= New Beetle Convertible
3C = Passat
7L = Touareg

* = US
 ** = CDN

2007 Volkswagen VIN Decoder

Country of origin	Manufacturer	Vehicle type	Series	Engine	Restraint system	Model (position 7&8)	Check digit	Model year	Assembly plant	Sequential serial number (position 12 - 17) This is the sequential production number of the specific vehicle.						
1	2	3	4	5	6	7	8	9	10	11	12	13	14	15	16	17



Model Year:

- L = 1990
- M = 1991
- N = 1992
- P = 1993
- R = 1994
- S = 1995
- T = 1996
- V = 1997
- W = 1998
- X = 1999
- Y = 2000
- 1 = 2001
- 2 = 2002
- 3 = 2003
- 4 = 2004
- 5 = 2005
- 6 = 2006
- 7 = 2007
- 8 = 2008
- 9 = 2009

2007 Restraints

- 2 Side Impact Air Bags - Front
(Canadian Vehicles only)
- 3 Advanced Front Air Bags
Side Impact Air Bags - Front
- 4 Active - Dr/Pass +
Front Air Bag - Dr/Pass **(All)**
- 6 Side Impact Air Bags - Front
Side Curtain Air Bags
(Canadian Vehicles only)
- 7 Advanced Front Air Bags
Side Impact Air Bags - Front
Side Curtain Air Bags
- 8 Advanced Front Air Bags
Side Impact Air Bags - Fr. Rr.
(Jetta only)
- 9 Side Curtain Air Bags
(CDN- GTI / Passat / Rabbit)
(US- All Others)

Check Digit 0-9 or "X"

This is a calculated digit per NHTSA code to determine the validity of a complete Vehicle Identification Number.

Must follow steps in order!

- 1- Model Year (position #10)
Locate & use appropriate card.
- 2 - Model Code (positions #7 & 8)
- 3 - Vehicle Series (position #4)
- 4 - Engine Code (position #5)